

2017 Yaris iA




TOYOTA | *Let's
Go
Places*



Yaris iA shown in Graphite and Yaris 5-Door SE shown in Blue Streak Metallic. Prototypes shown. Production models will vary.

SPORTY SUSPENSION

Find more excitement in every corner. Yaris iA features MacPherson strut front suspension and torsion beam rear suspension tuned to deliver a smooth ride and agile handling.



YARIS iA

Serious about style and fun?

It's time to crank up the attitude and amp up the fun. The 2017 Toyota Yaris iA is here for the go-getters, the influencers; those who live life on the cutting edge and appreciate great value. Its subcompact size is ready for the city, and its spacious cabin comfortably fits your friends and your favorite gear. Unmistakable style and advanced tech help put you at the center of all the attention. With its lively acceleration and inspired handling, you'll be smiling every time you get behind the wheel. Let's go places.



ALLOY WHEELS

Standard 16-in. alloy wheels keep you rolling in style. These split 5-spoke wheels not only look good, they help keep you in tune with the sporty side of Yaris iA.



A stylishly cool driving experience.

Yaris iA brings big-size comfort to a fun-size ride. Its thoughtfully crafted interior surrounds you with both style and substance thanks to standard features like contoured sport seats and steering wheel-mounted controls. Contrast stitching on the dash and carbon fiber-inspired trim pieces throughout convey a sense of sportiness, and the available 6-speed automatic with manual mode gives you more control of your drive. With a standard 7-in. touch-screen display, two USB ports⁴ and *Bluetooth*^{®7} connectivity, you've got instant access to your friends and music, too.



REMOTE KEYLESS ENTRY WITH PUSH BUTTON START

Yaris iA comes standard with remote keyless entry with Push Button Start. You can lock and unlock the doors, and open the trunk, with the easy-to-use key fob. Once inside, you can keep the key fob in your pocket or bag and start Yaris iA with the Push Button Start.



HANDS-FREE PHONE CAPABILITY

With *Bluetooth*^{®7} wireless technology standard in every Yaris iA, your phone can stay in your pocket and you can still access it from your car. This means easier access to your music, phone calls and more — all while helping you keep your hands on the wheel and your eyes on the road.



SPORT MODE BUTTON

Release your inner driver. The available Sport button on the center console of Yaris iA allows you to enable Sport Mode, in which the engine control unit and shift points are adjusted to give a sportier feel to your drive.



60/40 SPLIT FOLD-DOWN SEATS

Yaris iA will surprise you in a lot of ways — including how many of your favorite things you can fit inside. With its standard, versatile 60/40 split fold-down rear seats, you'll be packing more stuff in Yaris iA than you thought possible.

INTERIOR



Yaris iA interior shown in Mid-Blue Black. Prototype shown with options. Production model may vary.

Committed to safety.

Yaris iA comes packed with lots of standard safety features. Along with its six airbags,¹⁴ every Yaris iA comes standard with an advanced Active Safety System that includes Dynamic Stability Control (DSC),¹¹ Traction Control System (TCS), Brake Assist (BA),¹² Electronic Brake-force Distribution (EBD), Anti-lock Brake System (ABS) and Brake Over-ride System (BOS).¹³



TIRE PRESSURE MONITOR SYSTEM¹⁵

Our advanced Tire Pressure Monitor System (TPMS)¹⁵ comes standard on every Yaris iA. Designed to monitor the tire pressure at all times, it alerts the driver when a tire or tires become critically underinflated.



LATCH

LATCH (Lower Anchors and Tethers for CHildren) provides an added measure of safety for the smaller members of your family. LATCH includes lower anchors on the outboard rear seats and tether anchors on all rear seats.



LOW-SPEED PRE-COLLISION SYSTEM¹⁰

The Low-Speed Pre-Collision System¹⁰ is designed to detect certain objects on the road ahead of you and can, under certain conditions, apply the brakes to help avoid a collision.

iA CHOICES



Powertrain

- 1.5L 4-Cylinder Engine with 106 hp @ 6000 rpm
- 6-speed manual transmission or 6-speed automatic transmission
- 30 city/39 highway estimated mpg²⁰ (manual)
- 32 city/40 highway estimated mpg²⁰ (automatic)

Exterior Features

- 16-in. split 5-spoke alloy wheels
- Power outside mirrors with LED turn signal indicators
- Chrome-tipped exhaust
- Daytime Running Lights (DRL)

Interior Features

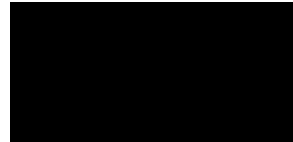
- 7-in. touch-screen display audio
- Integrated backup camera²
- Remote keyless entry w/Push Button Start
- Tilt/telescopic steering wheel with audio controls
- 2 USB ports⁴ with iPod[®] connectivity
- 60/40 split fold-down rear seats

Safety/Convenience

- Low-Speed Pre-Collision System¹⁰
- Active Safety System — includes Dynamic Stability Control (DSC),¹¹ Traction Control System (TCS), Brake Assist (BA),¹² Electronic Brake-force Distribution (EBD), Anti-lock Brake System (ABS), Brake Over-ride System (BOS)¹³

COLOR/TRIM/WHEELS

Color



Stealth



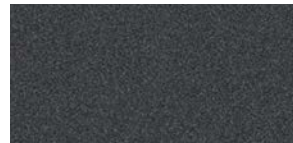
Abyss



Sapphire



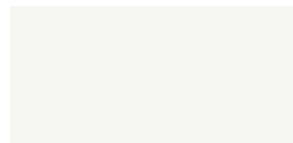
Pulse



Graphite



Chromium



Frost

Trim



Mid-Blue Black

Wheel



Split 5-spoke alloy wheel

Accessories



Doorsill enhancements



Carpet trunk mat



Rear spoiler



Mudguards

A wide range of Genuine Toyota Accessories is available to help make driving your Yaris iA even more fun. Now your Yaris iA can reflect your personal style. There is something for everyone. Some accessories may not be available in all regions of the country. For a complete list of accessories, go to toyota.com/yarisia.

FEATURES¹

EXTERIOR	iA		iA
16-in. split 5-spoke alloy wheels	S	Rear window defogger	S
185/60R16 tires	S	Chrome-tipped exhaust	S
Power outside mirrors with LED turn signal indicators	S	Daytime Running Lights (DRL)	S
Variable intermittent front windshield wipers	S	Halogen headlights	S
INTERIOR			
Air conditioning	S	Height-adjustable driver's seat	S
Backup camera ²	S	60/40 split fold-down rear seats	S
Power windows w/driver-side auto up/down and jam protection	S	Dual sun visors with vanity mirrors	S
Power door locks	S	4-piece carpeted floor mats ³	S
Remote keyless entry w/Push Button Start	S	7-in. touch-screen display audio	S
Digital clock	S	Integrated AM/FM antenna	S
Analog speedometer	S	Auxiliary audio jack	S
Tachometer	S	Two USB ports ⁴ with iPod ^{®5} connectivity	S
Tripmeter	S	Hands-free phone capability and music streaming ⁶ via <i>Bluetooth</i> ^{®7} wireless technology	S
Tilt/telescopic steering wheel with audio controls	S	Six speakers	S
Cruise control	S	AM/FM HD Radio™ Technology ⁸ plus Connected Services Suite	S
Fabric-trimmed sport front bucket seats	S	Voice recognition ⁹	S
6-way adjustable driver's seat and 4-way adjustable passenger's seat	S	Steering wheel controls	S
SAFETY AND CONVENIENCE			
Low-Speed Pre-Collision System ¹⁰	S	LATCH (Lower Anchors and Tethers for CHildren) includes lower anchors on outboard rear seats and tether anchors on all rear seats	S
Active Safety System — includes Dynamic Stability Control (DSC); ¹¹ Traction Control System (TCS), Brake Assist (BA); ¹² Electronic Brake-force Distribution (EBD), Anti-lock Brake System (ABS) and Brake Over-ride System (BOS) ¹³	S	Tire Pressure Monitor System (TPMS) ¹⁵	S
Driver and front passenger airbag ¹⁴ system	S	First aid kit	S
Driver and front passenger seat-mounted side airbags ¹⁴	S	Engine immobilizer ¹⁶	S
Front and rear side-curtain airbags ¹⁴	S	ToyotaCare ¹⁷ featuring a no cost maintenance plan with roadside assistance ¹⁸	S
3-point seatbelts for all seating positions; driver-side Emergency Locking Retractor (ELR) and Automatic/Emergency Locking Retractors (ALR/ELR) on all passenger belts	S		

S = Standard O = Optional

See numbered footnotes in Disclosures section.

SPECIFICATIONS

MECHANICAL/PERFORMANCE	iA
ENGINE	
1.5-Liter 4-Cylinder DOHC 16-Valve Variable Valve Timing with intelligence (VVT-i); 106 hp @ 6000 rpm; 103 lb.-ft. @ 4000 rpm	S
Bore x Stroke (mm)	76.0 x 82.6
Compression ratio	12.0 : 1
EMISSION RATING	
Ultra Low Emission Vehicle II (ULEV-II)	S
TRANSMISSION	
6-speed manual transmission	S
6-speed automatic transmission	O
FUEL-INJECTION SYSTEM	
Direct injection	S
DRIVETRAIN	
Front-Wheel Drive (FWD)	S
BODY CONSTRUCTION	
Unitized body	S
SUSPENSION	
Independent MacPherson strut front suspension with stabilizer bar; torsion beam rear suspension	S
STEERING	
Sport-tuned Electric Power Steering (EPS); power-assisted rack-and-pinion	S
Turning circle diameter, curb to curb (ft.)	32.2
Min. Turning Radius (ft.)	16.1
BRAKES	
Power-assisted ventilated front disc brakes; rear drum brakes	S
DRIVING MODE	
Sport Mode	O

WARRANTIES

Every Toyota Car, Truck and SUV is built to exceptional standards. And that's not idle boasting. We back it up with these Limited Warranty Coverages:

Basic: 36 months/36,000 miles (all components other than normal wear and maintenance items).

Powertrain: 60 months/60,000 miles (engine, transmission/transaxle, drive system, seatbelts and airbags).

Rust-Through: 60 months/unlimited miles (corrosion perforation of sheet metal).

Emissions: Coverages vary under Federal and California regulations. Refer to applicable *Warranty and Maintenance Guide* for details.

Accessories: For Genuine Toyota Accessories purchased at the time of the new vehicle purchase, the Toyota Accessory Warranty coverage is in effect for 36 months/36,000 miles from the vehicle's in-service date, which is the same coverage as the Toyota New Vehicle Limited Warranty.

DIMENSIONS	iA
EXTERIOR (in.)	
Overall height	58.5
Overall width	66.7
Overall length	171.7
Wheelbase	101.2
Track (front/rear)	58.9/58.5
Ground clearance	5.5
INTERIOR (front/rear) (in.)	
Head room	38.2/36.8
Shoulder room	53.1/50.0
Leg room	41.9/34.4
WEIGHTS AND CAPACITIES	
Curb weight (lb.)	2385
EPA passenger volume (cu. ft.)	85.9
Cargo volume (cu. ft.) ¹⁹	13.49
Fuel tank (gal.)	11.6
Seating capacity	5
TIRES	
All-season	S
Temporary	S
MILEAGE ESTIMATES (mpg city/highway/combined)²⁰	
6-speed automatic transmission	32/40/35
6-speed manual transmission	30/39/34

S = Standard **O** = Optional

For Genuine Toyota Accessories purchased after the new vehicle purchase the coverage is 12 months, regardless of mileage, from the date the accessory was installed on the vehicle, or the remainder of any applicable new vehicle warranty, whichever provides greater coverage, with the exception of car covers. Car covers are warranted for 12 months from the date of purchase and do not assume any coverage under the Toyota New Vehicle Limited Warranty.

You may be eligible for transportation assistance if it's necessary that your vehicle be kept overnight for repairs covered under warranty. Please see your authorized Toyota dealership for further details.

For complete details about Toyota's warranties, please visit www.toyota.com, refer to the applicable *Warranty and Maintenance Guide* or see your Toyota dealer.

CARS BUILT FOR THE WAY YOU LIVE

At Toyota, we build cars for how you live. From building advanced safety features designed to help prevent crashes to driving cross-country to understand how we can make your driving experience better, our work starts with understanding your needs. Building cars for how you live also means thinking about tomorrow — from fuel efficiency and environmental innovations, to things beyond cars, like a bicycle that you can control with your mind. And because what we learn building cars can help improve lives in other places, we do things like help communities rebuild their homes quickly after a disaster and work with soup kitchens to help them serve more people faster. Toyota. Built for how you live. Together we are going places.

DISCLOSURES

1. Toyota strives to build vehicles to match customer interest and thus they typically are built with popular options and option packages. Not all options/packages are available separately and some may not be available in all regions of the country. See toyota.com for information about options/packages commonly available in your area. If you would prefer a vehicle without any or with different options, contact your dealer to check for current availability or the possibility of placing a special order. 2. The backup camera does not provide a comprehensive view of the rear area of the vehicle. You should also look around outside your vehicle and use your mirrors to confirm rearward clearance. Environmental conditions may limit effectiveness and view may become obscured. See *Owner's Manual* for details. 3. This floor mat was designed specifically for use in your model and model year vehicle and SHOULD NOT be used in any other vehicle. To avoid potential interference with pedal operation, each mat must be secured with fasteners. Do not install a floor mat on top of an existing floor mat. 4. May not be compatible with all mobile phones, MP3/WMA players and like models. 5. iPod® and iPhone® are registered trademarks of Apple Inc. All rights reserved. 6. Apps/services vary by phone/carrier; functionality depends on many factors. Select apps use large amounts of data; you are responsible for charges. Apps and services subject to change. See toyota.com/entune for details. 7. Concentrating on the road should always be your first priority while driving. Do not use the hands-free phone system if it will distract you. The Bluetooth® word mark and logos are registered trademarks owned by Bluetooth SIG, Inc. and any use of such marks by Toyota is under license. A compatible Bluetooth®-enabled phone must first be paired. Phone performance depends on software, coverage and carrier. 8. Be sure to obey traffic regulations and maintain awareness of road and traffic conditions at all times. HD Radio™ Technology manufactured under license from iBiquity Digital Corporation U.S. and Foreign Patents. HD Radio™ and the HD, HD Radio, and "Arc" logos are proprietary trademarks of iBiquity Digital Corp. 9. Advanced voice recognition capabilities vary by head unit. 10. Low-Speed Pre-Collision System operates at speeds of 18 mph or less. It is intended to assist the driver, but it is the driver's responsibility to be aware of the vehicle's surroundings. The system cannot prevent all collisions, and performance is dependent upon road, weather and vehicle conditions. See *Owner's Manual* for details. 11. Dynamic Stability Control is an electronic system designed to help the driver maintain vehicle control under adverse conditions. It is not a substitute for safe driving practices. Factors including speed, road conditions and driver steering input can all affect whether DSC will be effective in preventing a loss of control. See *Owner's Manual* for details. 12. Brake Assist is designed to help the driver take full advantage of the benefits of ABS. It is not a substitute for safe driving practices. Braking effectiveness also depends on proper brake-system maintenance and tire and road conditions. See *Owner's Manual* for details. 13. Brake Over-ride System operates only in the event of certain simultaneous brake and gas pedal applications. When engaged, the system will reduce engine power to help the brakes bring the vehicle to a stop. Factors including speed, road conditions and driver input can all impact stopping distance. Brake Over-ride System is not a substitute for safe and attentive driving and does not guarantee instant stopping. See *Owner's Manual* for details. 14. All the airbag systems are Supplemental Restraint Systems. All airbags (if installed) are designed to inflate only under certain conditions and in certain types of severe collisions: typically, frontal and knee airbags inflate in frontal collisions, side torso and side curtain airbags inflate in side collisions and roll-sensing curtain airbags inflate at a severe roll angle or roll rate. To decrease the risk of injury from an inflating airbag, always wear seatbelts, sit upright in the middle of the seat as far back as possible and do not lean against the door. Do not put objects in front of an airbag or around the seatback. Do not use a rearward-facing child seat in any front passenger seat. The force of an inflating airbag may cause serious injury or death. See your *Owner's Manual* for further information/warnings. 15. The Toyota Tire Pressure Monitor alerts the driver when tire pressure is critically low. For optimal tire wear and performance, tire pressure should be checked regularly with a gauge; do not rely solely on the monitor system. See *Owner's Manual* for details. 16. The engine immobilizer is a state-of-the-art anti-theft system. When you insert your key into the ignition switch or bring a Smart Key fob into the vehicle, the key transmits an electronic code to the vehicle. The engine will only start if the code in the transponder chip inside the key/fob matches the code in the vehicle's immobilizer. Because the transponder chip is embedded in the key/fob, it can be costly to replace. If you lose a key or fob, your Toyota dealer can help, or you can find a qualified independent locksmith to perform high-security key services by consulting your local Yellow Pages or by contacting www.aloa.org. 17. ToyotaCare covers normal factory scheduled service for 2 years or 25,000 miles, whichever comes first. 24-hour roadside assistance is also included for 2 years and unlimited miles. See Toyota dealer for details and exclusions. Valid only in the continental U.S. and Alaska. 18. Does not include parts and fluids, except emergency fuel delivery. Valid only in the continental U.S. and Alaska. 19. Cargo and load capacity limited by weight and distribution. 20. 2017 EPA-estimated city/highway mileage. Actual mileage will vary.

Toyota strives to build vehicles to match customer interest and thus they typically are built with popular options and option packages. Not all options/packages are available separately and some may not be available in all regions of the country. See toyota.com for information about options/packages commonly available in your area. If you would prefer a vehicle without any or with different options, contact your dealer to check for current availability or the possibility of placing a special order. Some vehicles are shown with available equipment. Seatbelts should be worn

at all times. For details on vehicle specifications, standard features and available equipment in your area, contact your Toyota dealer. A vehicle with particular equipment may not be available at the dealership. Ask your Toyota dealer to help locate a specifically equipped vehicle.

All information presented herein is based on data available at the time of posting, is subject to change without notice and pertains specifically to mainland U.S.A. vehicles only. Prototypes shown. Actual production vehicles may vary.



For Toyota Mobility program details, go to www.toyota.com/mobility or call the Toyota Customer Assistance Center at 1-800-331-4331